

MCD

350ps

MCD RealSubns®

Q

1064nm 532nm

355nm 266nm

300ps

100μJ

偏振方向稳定性高

0.1kHz

TEM₀₀

光学参数

(nm)		1064	532	355	266
(kHz)		0.1	0.1	0.1	0.1
(mW)		10	3	1.5	0.5
(J)		100	30	15	5
(ps)		350	300	300	300
(8h)		±3%			
		TEM ₀₀			
Typ.(mrad)	@1/e ²	12	10	8	8
	@1/e ²	12	10	8	8
		>100:1			

系统参

		100-240 VAC	50/60 Hz
		RS232	USB
(W)		25	
(W×H×L,mm)		168×88×140	
(W×H×L,mm)		45×33×120	
()		15~35	
()		0~60	

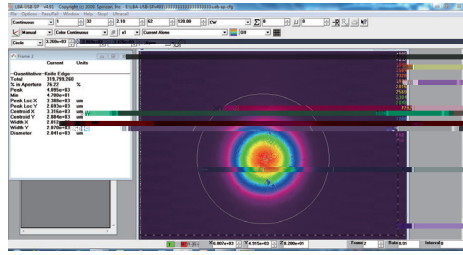
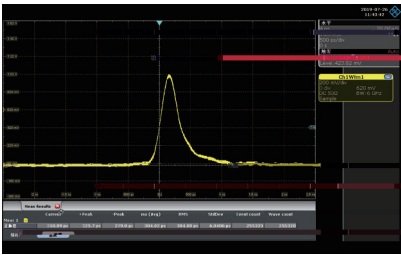
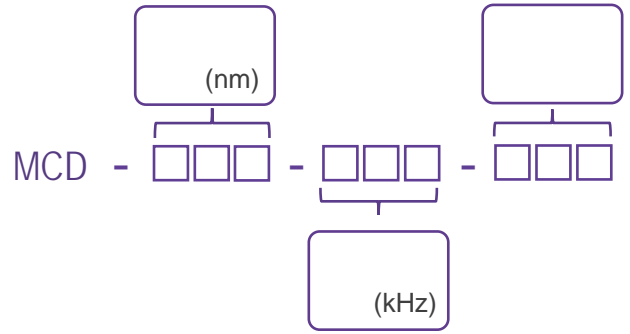
1.

2.

2mrad

3.

CEM



mm

